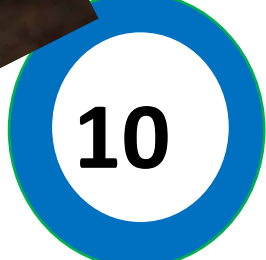


**Summer 2**  
Employment skills and employment law. National and local labour market. Identification of skills needed in the labour market. How the law can protect workers. Revision of first aid and how to seek help in readiness for the holidays.



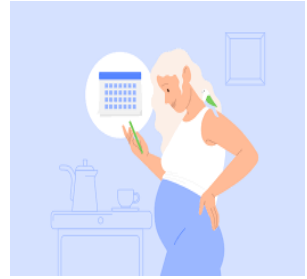
**Summer 1**  
Balance online. Cosmetic procedures. CCE, CSE. To know main risks of cosmetic procedures. To have additional understanding to exploitation of young people and how anyone can be at risk.



**Spring 2**  
Mental and Emotional Health . To support positive health. Substance misuse and its effect on overall health. To know the symptoms of 3 mental health conditions and where to seek support.



**Spring 1**  
Fertility and pregnancy. Planned and unplanned pregnancy including miscarriage and support. Fertility. Child development. Routes to parenthood. NHS use and support.



**CONSENT**

- Freely Given
- Reversible
- Informed
- Enthusiastic
- Specific

**Autumn 2**  
Assertiveness and Resilience. To learn about positive mantras and growth mindset. Recognise behaviours that can be coercive or controlling. Strategies to support and ways to seek help. Consent – including consent online and sharing images.

**Autumn 1**  
Physical, mental and social health. To know characteristics of health and how to maintain and improve it. Identify and manage unhealthy behaviours and how to access support. Wear Yellow for Young Minds 10 Oct.



**Coming From KS3 at KSSS or elsewhere**

Carer Counsellor Doctor Journalist Nurse Police Politician Solicitor Teacher

Collaboration Compassion Empathy Gratitude Honesty Humour Inclusion Mindfulness Perspective Positivity Self-acceptance Trust